

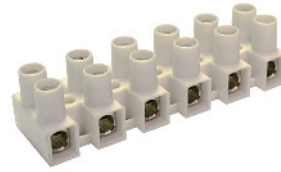
## FEED-THROUGH FLAT BASE Panel Mount

For wire-to-wire connections in HVAC, appliance, equipment, power distribution and other industrial applications with strict budget and space requirements. Easy to use double row terminal strips are a cost-effective alternative to barrier strips or other types of terminal blocks. Simply strip the wire, insert and tighten the screw. Eurostrips feature tubular screw clamps, with wire protectors, and recessed metal parts for finger protection. The stainless steel wire protectors exhibit excellent memory and the most effective connection.

Eurostrips described on this and the following page are available with a flat base for minimum clearance applications. They can be panel mounted or left to free float. Offered in easy-to-cut standard 12-pole strips, they can also be ordered precut with the required number of poles.

- Tubular screw clamp
- Panel mount or free float
- Housing material:
  - Polyamide 66/6
  - V-O flammability
- Color: opaque white
- Marking plates or factory imprinted application

### HE1

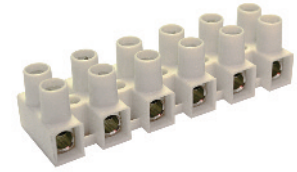


Flat base with wire protector

Pole Spacing	8 mm
Mounting Hole Diameter	3 mm
Stripping Length	5 mm
Approvals	US E211022
Wire Range	24-12 AWG
Voltage Rating	300 V
Current Rating	20 A
Torque	4.4 lb-in
Other Approvals	

No. of Poles	Cat. No.	Std. Pk.
2	HE1WPR/02	100
3	HE1WPR/03	100
4	HE1WPR/04	100
5	HE1WPR/05	100
6	HE1WPR/06	50
7	HE1WPR/07	50
8	HE1WPR/08	50
9	HE1WPR/09	50
10	HE1WPR/10	50
11	HE1WPR/11	50
12	HE1WPR/12	50

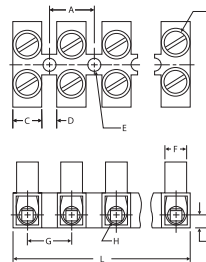
### HE4



Flat base with wire protector

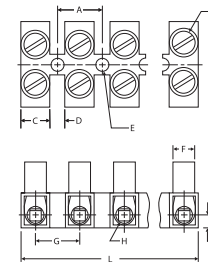
Pole Spacing	10 mm
Mounting Hole Diameter	3.6 mm
Stripping Length	6 mm
Approvals	US E211022
Wire Range	24-10 AWG
Voltage Rating	300 V
Current Rating	30 A
Torque	7.0 lb-in
Other Approvals	

Cat. No.	Std. Pk.
HE4WPR/02	100
HE4WPR/03	100
HE4WPR/04	100
HE4WPR/05	100
HE4WPR/06	50
HE4WPR/07	50
HE4WPR/08	50
HE4WPR/09	50
HE4WPR/10	50
HE4WPR/11	50
HE4WPR/12	50



Dimensions mm

A = 8.0	H = Ø2.8
B = M2.6	I = 2.8
C = 5.2	J = 6.5
D = 2.8	K = 6.5
E = Ø3	L = 94 (12 pole)
F = Ø5	M = 12.2
G = 8.0	N = 16.2



Dimensions mm

A = 10.0	H = Ø3.6
B = M3	I = 3.2
C = 6.4	J = 8.5
D = 3.5	K = 7.9
E = Ø3.6	L = 117 (12 pole)
F = Ø5.7	M = 14.9
G = 10.0	N = 20.0