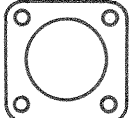


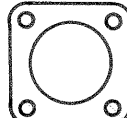
ASSEMBLY NUMBER	CB NUMBER	A THREAD PLATED CLASS 2A	B MIN FULL THD	C +.016 -.047	K +.020 -.010	L	M +.010 -.000	R ±.005	S	T DIA +.004 -.002	V THREAD PLATED CLASS 2A	Z +.050 -.060
10-68308-		NOT AVAILABLE										
10-68310-	3100-10S-	.6250-24 NEF	.391	.492	.672	.969	.563	.719	1.000	.120	.5000-28 UNEF	.422
10-68311-	-10SL-	.6250-24 NEF	.391	↓	↓	↓	.562	.719	1.000		.6250-24 NEF	↓
10-68312-	-12S-	.7500-20 UNEF	.450	↓	↓	↓	.563	.812	1.094		.6250-24 NEF	↓
10-68313-	-12-	.7500-20 UNEF	.625	.679	.860	1.344	.750	.812	1.094		.6250-24 NEF	.672
10-68314-	-14S-	.8750-20 UNEF	.450	.492	.672	.969	.563	.906	1.188		.7500-20 UNEF	.422
10-68315-	-14-	.8750-20 UNEF	.625	.679	.860	1.344	.750	.906	1.188		.7500-20 UNEF	.672
10-68316-	-16S-	1.0000-20 UNEF	.450	.492	.672	.969	.562	.969	1.281		.8750-20 UNEF	.422
10-68317-	-16-	1.0000-20 UNEF	.625	.679	.860	1.344	.750	.969	1.281		.8750-20 UNEF	.672
10-68318-	-18-	1.1250-18 NEF			.891	1.344		1.063	1.375		1.0000-20 UNEF	.641
10-68320-	-20-	1.2500-18 NEF			↓	↓	↓	1.156	1.500		1.1250-18 NEF	↓
10-68322-	-22-	1.3750-18 NEF			↓	↓	↓	1.250	1.625		1.2500-18 NEF	↓
10-68324-	-24-	1.5000-18 NEF			.953	1.406	.813	1.375	1.750	.147	1.3750-18 NEF	.578
10-68328-	-28-	1.7500-18 NS			.953	1.406	.812	1.562	2.000	.147	1.6250-18 NEF	.578
10-68332-	-32-	2.0000-18 NS			1.032	1.469	.875	1.750	2.250	.173	1.8750-16 N	.500
10-68336-	-36-	2.2500-16 UN			1.031	1.469	.875	1.938	2.500	.173	2.0625-16 N	.500
10-68340-		NOT AVAILABLE										

REL NO 30508-99		REVISIONS		
CHG NO.	SYM	DESCRIPTION	DATE	APPROVED
38525-471	A2	PROVIDED SERIES COMPOSITE DRAWING REPLACING SHELL SIZE COMPOSITE DRAWINGS	3-7-62	K HISCOTT
42762-1	A3	WAS TEST 9-3107-3 & ASSY 9-3104-1 (PRO SPEC); REV NOTE 8	3-12-64	Randall Hayes
47525-818	A4	ADDED THERMO & COAXIAL DATA BLOCK, SPECIAL & THERMO. SOLDER WELL DATA; DISCARDED INDIVIDUAL DWGS 10-68312-51 & -54	7-14-67	Whitney

ACCESSORIES
(NOT PART OF STANDARD ASSEMBLY)



FLANGE GASKET,
PLAIN
10-40450 - (SHELL SIZE)

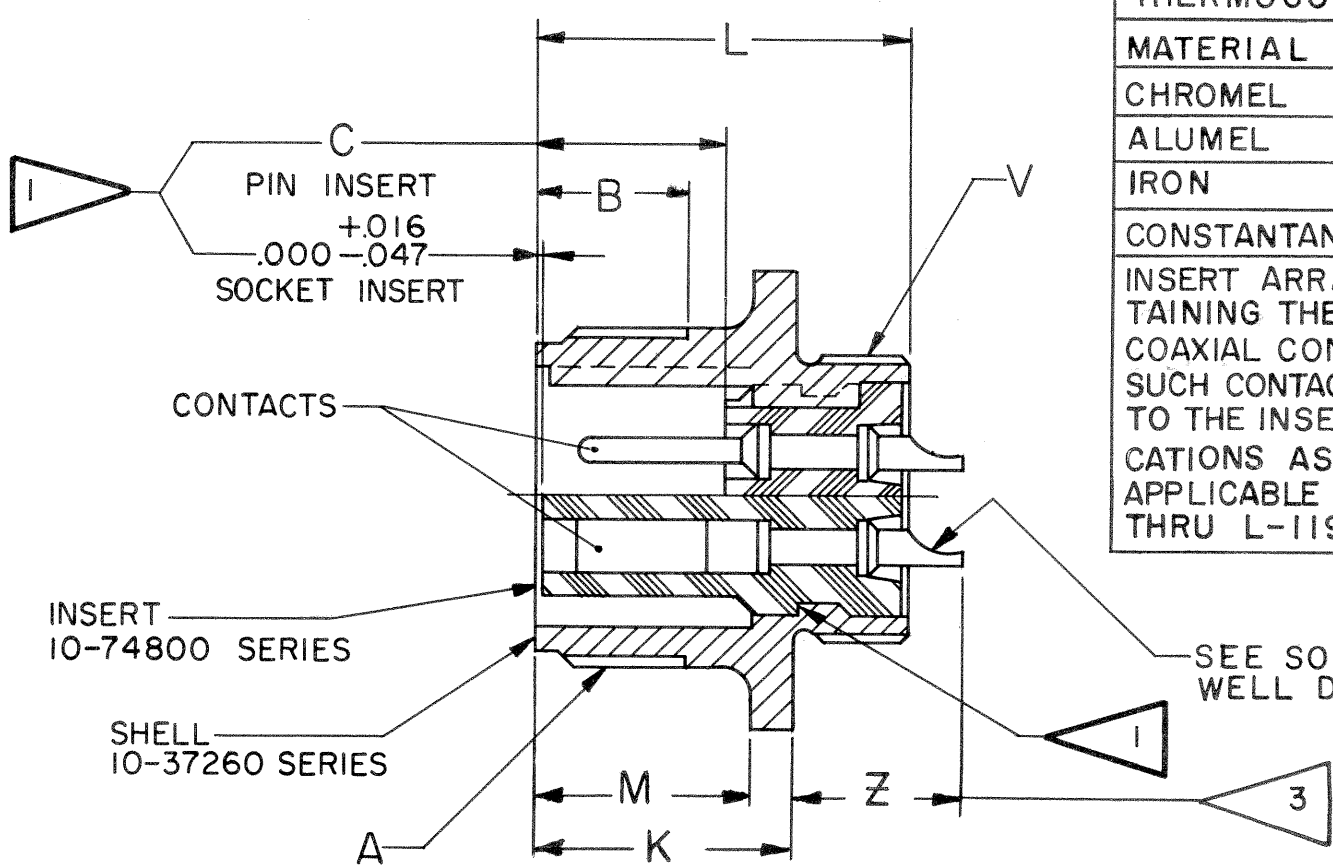
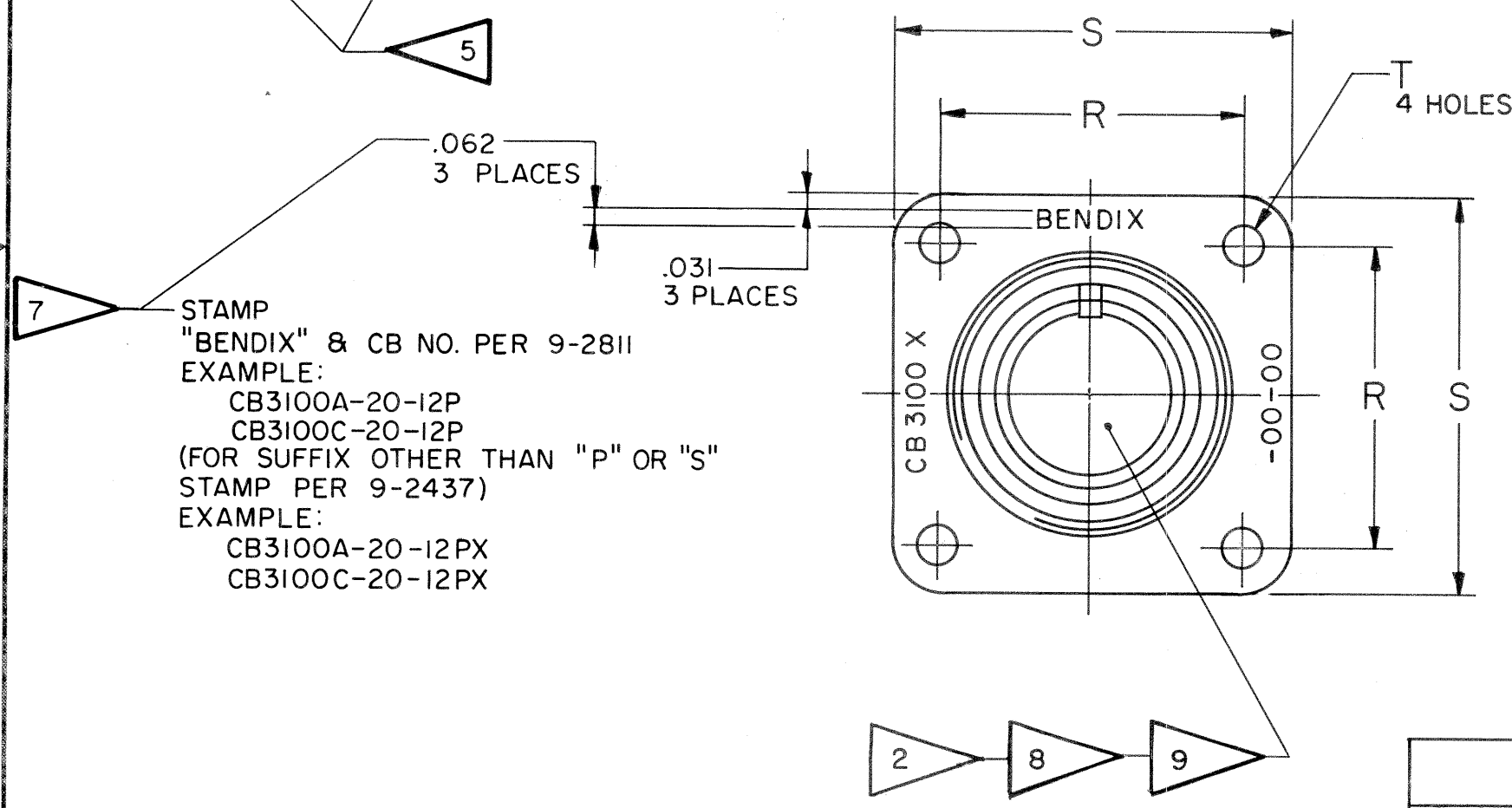


FLANGE GASKET,
SHIELDED
10-40450 - (SHELL SIZE)

CONTACT DATA (WHERE APPLICABLE)

THERMOCOUPLE		COAXIAL	
MATERIAL	IDENTIFICATION	ARR	CABLE
CHROMEL	WHITE		
ALUMEL	GREEN		
IRON	BLACK		
CONSTANTAN	YELLOW		

INSERT ARRANGEMENTS CONTAINING THERMOCOUPLE OR COAXIAL CONTACTS MUST HAVE SUCH CONTACTS ASSEMBLED INTO THE INSERT IN PROPER LOCATIONS AS SPECIFIED BY APPLICABLE DRAWING L-11908-() THRU L-11943-().



- SEE WORK ORDER FOR PERMISSIBLE ADDITIONAL OR ALTERNATE STAMPING.
 - UNITS ILLUSTRATED MEET THE MATERIAL & FINISH REQUIREMENTS OF MIL-C-5015D.
 - TO COMPLETE ASSEMBLY NUMBER & CB NO. ADD APPLICABLE INSERT ARRANGEMENT SUFFIX TO BASE NUMBERS LISTED ABOVE. (FOR ALTERNATE ARRANGEMENT REFER TO 9-2437). TO DETERMINE DESIRED INSERT ARRANGEMENT, SEE PARTS LISTS 10-68308/40.
 - SEE DRAWINGS 10-68608/40 & OTHERS FOR REQUIRED MATING PLUG ASSEMBLIES.
 - INCREASE Z DIMENSION BY .312 FOR SIZE "0" CONTACT ONLY.
 - FOR CONTACT SIZE, SPACING & SERVICE RATING, SEE DRAWINGS AND10425 THRU AND10435.
 - DIMENSIONS MUST BE MAINTAINED WHEN INSERTS ARE PRESSED FIRMLY AGAINST INDICATED SHOULDER.
- NOTES: REF SYMBOL ◁

- ALL 10- & 61- ASSEMBLIES TO BE ASSEMBLED PER 9-3103-1 AND TESTED PER 9-3106-5. INSERTS AND CONTACTS ARE REMOVABLE.
- ALL 62- ASSEMBLIES TO BE ASSEMBLED PER 9-3238-1 AND TESTED PER 9-3106-4. INSERTS AND CONTACTS ARE NOT REMOVABLE.

CONTACT SIZE	STANDARD SOLDER WELL DATA					SPECIAL SOLDER WELL DATA			THERMOCOUPLE	
	0	4	8	12	16	8 FOR #6 WIRE	12 FOR #10 WIRE	16 FOR #12 WIRE	12	16
WELL DIA	.469 ^{+.005} _{-.003}	.332 ^{+.005} _{-.003}	.209 ^{+.004} _{-.002}	.116 ^{+.004} _{-.002}	.078 ^{+.004} _{-.002}	.250±.003	.152 ^{+.004} _{-.002}	.109 ^{+.004} _{-.000}	.125 ^{+.004} _{-.002}	.094 ^{+.004} _{-.002}
WELL DEPTH	.625	.625	.500	.375	.250	.500	.250	.188	.250	.188

ITEM NO.	QTY REQD	DESCRIPTION	PART NUMBER	CODE IDENT	ZONE	NEXT ASSEMBLY
UNLESS OTHERWISE SPECIFIED						
DRAWN: J. RUSSO		DATE: 12-26-61		THE Bendix CORPORATION		
CHECKED: R. Black		DATE: 12-28-61		SCINTILLA DIVISION		
MATERIAL SPEC		PROCESS SPEC TEST		CONNECTOR, ELECTRICAL RECEPTACLE, TYPE CB () FW		
STANDARDS: f. Balantieri 12-29-61		DRAFTING: R. Black 12-29-61		CODE IDENT NO. 77820		
ENGINEERING: J. M. Jamney 12-29-61		DEVELOPMENT:		SIZE C		
SEE NOTES 8 & 9		9-2437, 9-2811		10-68308 THRU 10-68340		
SCALE NONE		WT SEE PARTS LIST		REF 10-41308/40		SHEET